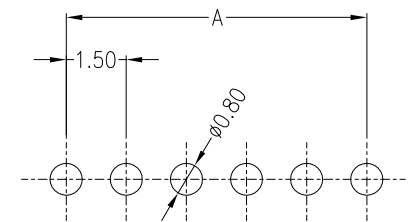


REV	DESCRIPTION	DESIGN	DATE
A	NEW RELEASE	Lingqing	2021/06/02

Circuits	Dimensions (mm)		
	A	B	C
02	1.50	3.60	4.50
03	3.00	5.10	6.00
04	4.50	6.60	7.50
05	6.00	8.10	9.00
06	7.50	9.60	10.50
07	9.00	11.10	12.00
08	10.50	12.60	13.50
09	12.00	14.10	15.00
10	13.50	15.60	16.50
11	15.00	17.10	18.00
12	16.50	18.60	19.50
13	18.00	20.10	21.00
14	19.50	21.60	22.50
15	21.00	23.10	24.00
16	22.50	24.60	25.50

**Specifications:**  
 Contact resistance:  $\leq 20m\Omega$   
 Insulation resistance:  $\geq 500M\Omega$   
 Rated voltage: 125V AC DC  
 Rated current: 1.0A AC DC  
 Withstand voltage: 500V AC/minute  
 Temperature range:  $-25^{\circ}C \sim +105^{\circ}C$   
 Housing: LCP UL94V-0, Natural  
 Cap: LCP UL94V-0, Natural  
 Contacts: Brass/Sn-plated



RECOMMENDED PCB LAYOUT(TOP VIEW)  
 TOLERANCE:  $\pm 0.05mm$

**ORDER INFORMATION:**

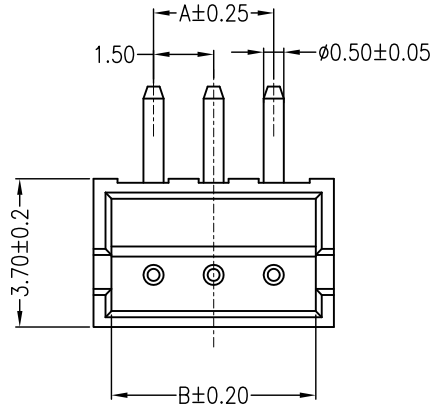
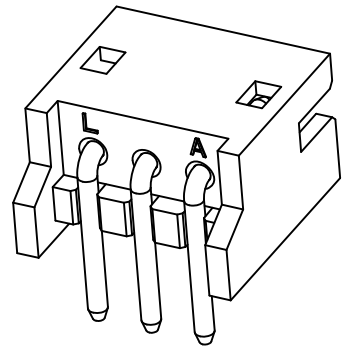
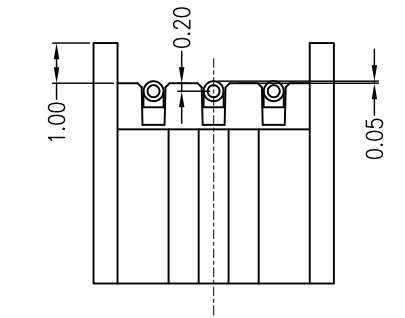
T1502A-\*\*-F2MA2-R-X

PART No. \_\_\_\_\_  
 No.OF CIRCUITS: \_\_\_\_\_  
 02~16  
 PLASTIC MATERIAL: \_\_\_\_\_  
 F2M=LCP(BEIGE)

X=CAP  
 PACKAGING:  
 R=REEL  
 Metal code:  
 2=Brass  
 PLATING:  
 A=Sn-plated

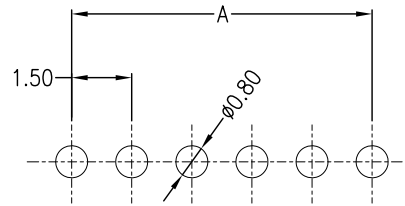
<b>JKUN 温州健坤接插件有限公司</b> WENZHOU JKUN CONNECTOR CO.,LTD.		TITLE: 1.50mm pitch 180°Wafer PIP type	
GENERAL TOLERANCE		USE: CUSTOMER	PART NO.:
X. $\pm 0.50$	X. $\pm 5^{\circ}$	APPD: Shaojinghe	T1502A-**-F2MA2-R-X
X.X $\pm 0.30$	X.X $\pm 2^{\circ}$	CHKD: Fangsongle	DWG NO.:
X.XX $\pm 0.20$	X.XX $\pm 1^{\circ}$	DR: Zenglingqing	JKUN-GCKH-0924
	UNITS: mm	SCALE 1 : 1	SHEET 1 / 1

REV	DESCRIPTION	DESIGN	DATE
A	NEW RELEASE	Lingqing	2021/02/23

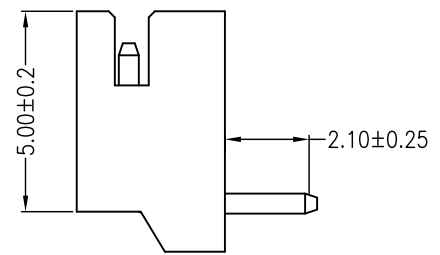
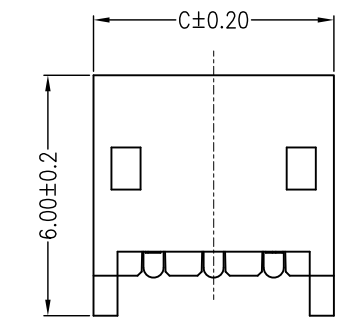


Circuits	Dimensions (mm)		
	A	B	C
02	1.50	3.60	4.50
03	3.00	5.10	6.00
04	4.50	6.60	7.50
05	6.00	8.10	9.00
06	7.50	9.60	10.50
07	9.00	11.10	12.00
08	10.50	12.60	13.50
09	12.00	14.10	15.00
10	13.50	15.60	16.50
11	15.00	17.10	18.00
12	16.50	18.60	19.50
13	18.00	20.10	21.00
14	19.50	21.60	22.50
15	21.00	23.10	24.00
16	22.50	24.60	25.50

Specifications:  
 Contact resistance: ≤20mΩ  
 Insulation resistance: ≥500MΩ  
 Rated voltage: 125V AC DC  
 Rated current: 1.0A AC DC  
 Withstand voltage: 500V AC/minute  
 Temperature range: -25°C ~ +105°C  
 Housing: LCP UL94V-0, Natural  
 Contacts: Brass/Sn-plated



RECOMMENDED PCB LAYOUT (TOP VIEW)  
 TOLERANCE: ±0.05mm



ORDER INFORMATION:

T1502AWD-\*\*-F2MA2-R

PART No. \_\_\_\_\_  
 No. OF CIRCUITS: \_\_\_\_\_  
 02~16  
 PLASTIC MATERIAL: \_\_\_\_\_  
 F2M=LCP(BEIGE)

PACKAGING:  
 R=REEL  
 Metal code:  
 2=Brass  
 PLATING:  
 A=Sn-plated

<b>JKUN</b> 温州健坤接插件有限公司 WENZHOU JKUN CONNECTOR CO.,LTD.		TITLE: 1.50mm pitch 90°Wafe PIP type	
GENERAL TOLERANCE		USE: CUSTOMER	PART NO.:
X. ±0.50	X. ±5°	APPD: Zhangzhongyong	T1502AWD-**-F2MA2-R
X.X ±0.30	X.X ±2°	CHKD: Fangsongle	DWG NO.:
X.XX ±0.20	X.XX ±1°	DR: Zenglingqing	JKUN-GCKH-0925
UNITS: mm		SCALE 1 : 1	SHEET 1 / 1